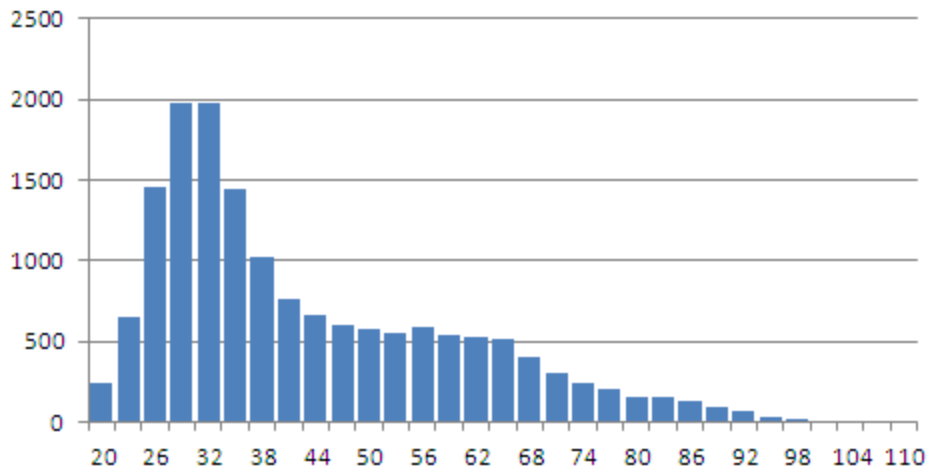
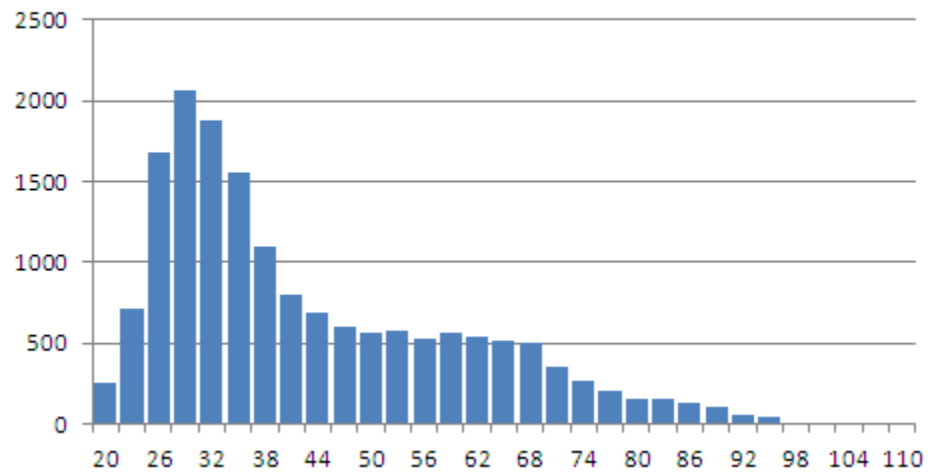


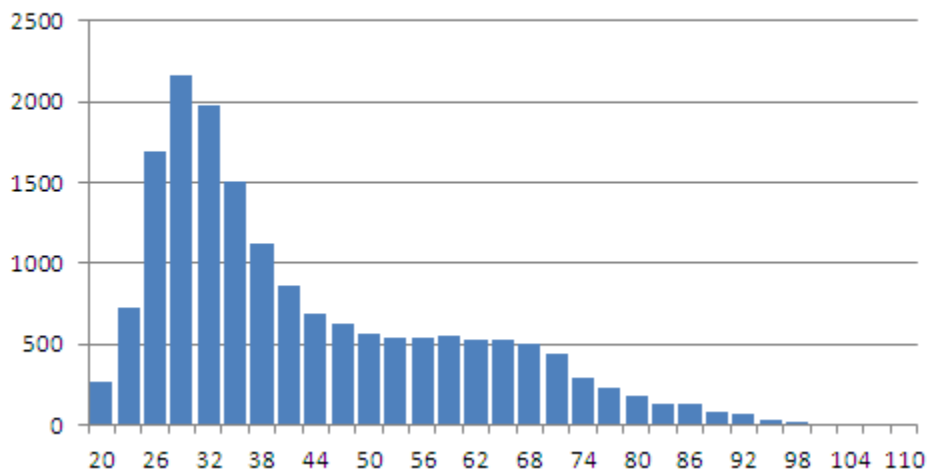
Registered 2012 (Toomey HD - Cambridge)



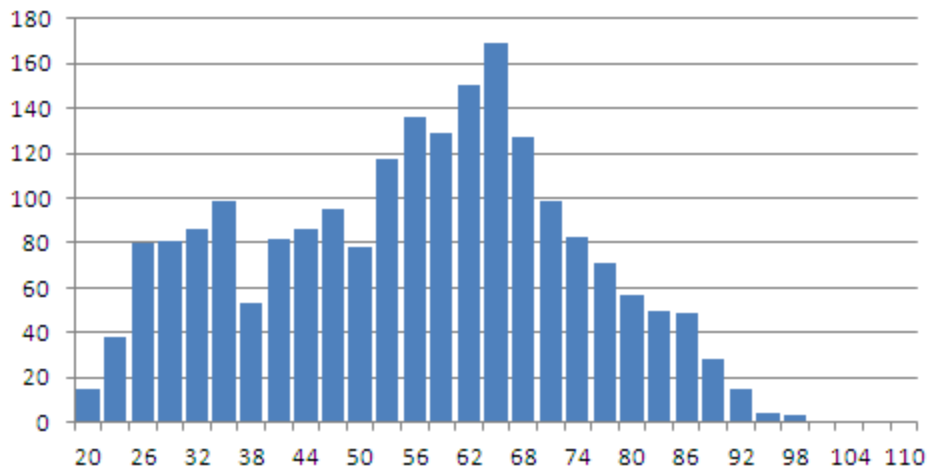
Registered 2014 (Toomey HD - Cambridge)



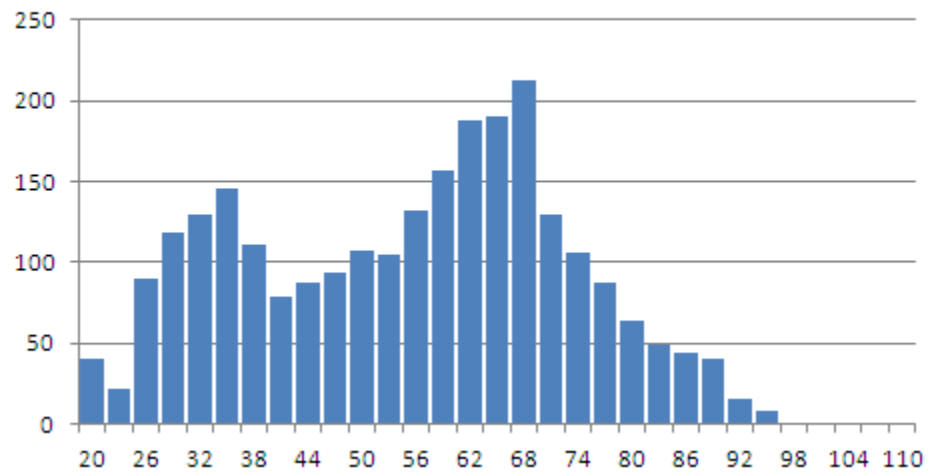
Registered 2016 (Toomey HD - Cambridge)



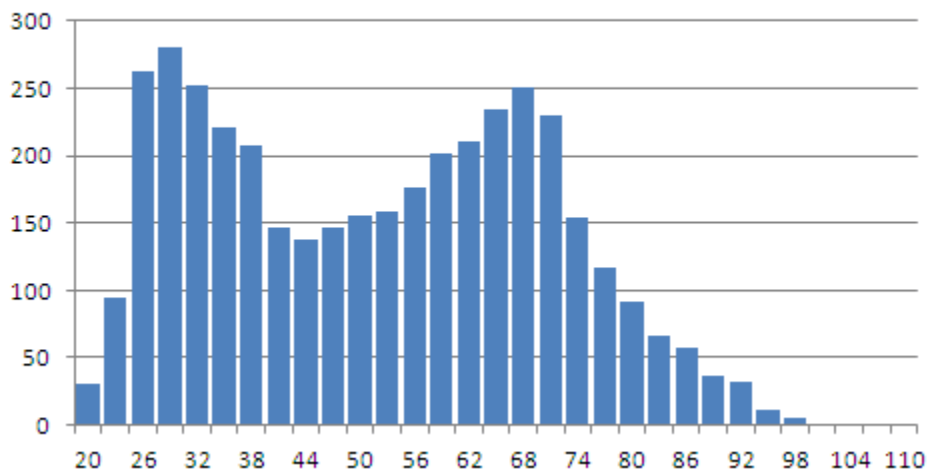
Voted 2012 (Toomey HD - Cambridge)



Voted 2014 (Toomey HD - Cambridge)



Voted 2016 (Toomey HD - Cambridge)



**Distribution of registered voters and those who voted - by age (2012, 2014, 2016)
Toomey Representative District - Cambridge portion**

AGE		2012 State Primary			2014 State Primary			2016 State Primary		
from	to	reg2012	voted2012	pct2012	reg2014	voted2014	pct2014	reg2016	voted2016	pct2016
18	20	242	15	6.20	261	40	15.33	267	31	11.61
21	23	652	38	5.83	717	22	3.07	724	95	13.12
24	26	1457	80	5.49	1675	90	5.37	1689	262	15.51
27	29	1981	81	4.09	2067	118	5.71	2161	280	12.96
30	32	1979	86	4.35	1881	129	6.86	1973	252	12.77
33	35	1440	99	6.88	1559	146	9.36	1501	221	14.72
36	38	1026	53	5.17	1094	111	10.15	1121	208	18.55
39	41	759	82	10.80	798	79	9.90	866	146	16.86
42	44	663	86	12.97	694	88	12.68	691	138	19.97
45	47	601	95	15.81	600	94	15.67	632	147	23.26
48	50	578	78	13.49	561	107	19.07	560	155	27.68
51	53	549	117	21.31	576	105	18.23	546	158	28.94
54	56	591	136	23.01	531	132	24.86	545	176	32.29
57	59	535	129	24.11	565	157	27.79	551	202	36.66
60	62	527	150	28.46	546	188	34.43	530	211	39.81
63	65	511	169	33.07	514	190	36.96	524	234	44.66
66	68	405	127	31.36	503	213	42.35	500	251	50.20
69	71	305	99	32.46	350	130	37.14	438	230	52.51
72	74	242	83	34.30	267	106	39.70	291	154	52.92
75	77	201	71	35.32	205	87	42.44	231	117	50.65
78	80	162	57	35.19	158	64	40.51	175	92	52.57
81	83	162	50	30.86	161	49	30.43	131	66	50.38
84	86	137	49	35.77	130	44	33.85	136	57	41.91
87	89	93	28	30.11	104	41	39.42	81	36	44.44
90	92	70	15	21.43	63	16	25.40	74	32	43.24
93	95	30	4	13.33	39	8	20.51	35	12	34.29
96	98	15	3	20.00	9	0	0.00	16	5	31.25
99	101	4	0	0.00	7	1	14.29	4	1	25.00
102	104	2	0	0.00	1	0	0.00	1	0	0.00
105	107	0	0		0	0		0	0	
108	110	0	0		0	0		0	0	
		15919.00	2080.00	13.07	16636.00	2555.00	15.36	16994.00	3969.00	23.36
median		36.56	56.90		36.44	57.42		36.41	51.82	
mean		42.56	55.18		42.43	55.05		42.43	51.39	